



# Digital Video User Guide

**Cover page to be revised**

## **Copyright Information**

All rights reserved. No part of this publication may be reproduced, transmitted, stored in a retrieval system, or translated into any language in any form by any means, optical, electronic, recording, or otherwise, without the written consent of our company.

We reserved the right to revise this manual and to make changes to any or all parts at any time, without obligation to notify any person or entity of such revisions and changes.

## **Reminders**

### **CAUTION**

Keep product out of direct sunlight. Exposure to direct sunlight or extreme heat may cause damage or malfunction. To prevent fire or shock hazard, do not expose to rain or moisture.

### **BACK UP YOUR DATA**

As with any device that has flash memory, you should back up the drive regularly.

### **IMPORTANT BATTERY INFORMATION**

The battery used in this device may present a risk of fire or chemical burn if mistreated. Do not separately recharge, disassemble, heat above 60° C (140° F), or incinerate.

Do not attempt to open the unit. No user serviceable parts inside.  
Keep the unit away from children. Do not disassemble or dispose product in fire.

Use only the specified chargers which were packaged with the product. Use of another charger may present a risk of fire or explosion.  
Keep charger plugged in to device for at least 3 hours before attempting to operate device if battery is completely run down and is insufficient to power up device.

## Specifications

<b>Function</b>	Digital Camcorder, Digital Still Camera, Digital Voice Recorder, MP3 Player, Video Camera, SD/MMC Card Reader, PC Cam	
<b>Image Sensor</b>	3.1 Mega CCD	
<b>Lens</b>	Focal Length	f = 6.7 mm
	Aperture Ratio	F = 3.5/8.0
<b>Digital Zoom</b>	4X	
<b>Display</b>	2.5" TFT LCD	
<b>Shutter Speed</b>	1/10 sec. ~ 1/1000 sec.	
<b>Flashlight</b>	Built-in / IGBT Type	
<b>External Memory</b>	SD/MMC	
<b>Interface</b>	USB 2.0 / AV Out / Earphone	
<b>Television System</b>	NTSC/PAL	
<b>Battery Type</b>	Rechargeable Li-ion Battery x 1 (1500 mAh)	
<b>Power Source</b>	DC-in (Charger inside/ Power Adapter (5V/ 1A) or Docking Station)	
<b>Dimension</b>	84 x 55 x 95 mm (L x W x H)	
<b>Weight</b>	220g (Without Battery)	

### Digital Camcorder

<b>Resolution</b>	Fine	VGA - 640 x 480 (12 fps)
	Normal	400X304 (25 fps)
	Economic	352X288 (30 fps)
<b>Quality</b>	Fine	Low compression rate
	Normal	High compression rate

**File Format (Video)** ASF file (MPEG 4 compatible)

### **Digital Still Camera**

<b>Resolution</b>	Fine	2624 x 1968 (H/W enhancement)
	Normal	2048 x 1536
	Economic	640 x 480
<b>Quality</b>	Fine	
	High	
	Normal	
<b>Self-Timer</b>		10 Seconds Delay
<b>File Format (Image)</b>		JPEG Compatible
<b>Scene Mode</b>		Auto / Portrait / Landscape / Sport / Night Portrait

### **Digital Voice Recorder**

<b>File Format</b>	WAV
--------------------	-----

### **MP3 Player**

<b>File Format</b>	MP3
--------------------	-----

### **PC Camera**

<b>Video Frame Rate (PC Cam)</b>	20 ~ 30 fps (320 x 240)
----------------------------------	-------------------------

<b>System Requirements</b>	Pentium 266 MHz processor or higher
	Microsoft Windows 98se / Me / 2000 / XP
	Available USB port
	Super VGA card and color monitor
	CD-ROM or DVD-ROM drive
	At least 128 MB of RAM
	200 MB of available HD space


<b>Video Capture Driver (PC Cam)</b>	Win 98SE / Me / 2000 / XP
--------------------------------------	---------------------------

<b>Mass Storage Support</b>	Win 98SE, Me, 2000, XP / MAC OS 9.X and OS 10.1 or above
-----------------------------	--

## **USB Device Unplugging Notice:**

If you want to unplug the device from your computer, be sure to stop the device before hand. To stop the device, follow the steps below:

### **Remove from PC: (For Windows ME/2000/XP)**

1. Click on the device icon  located on the taskbar. Select the device you want to stop (e.g. Stop USB Mass Storage Device Drive(E:)).
2. Follow the on-screen instructions to safely remove the device.

### **Remove from Mac: (For Mac OS 9.X and 10.1 above)**

1. Select the device icon (Shown as 'NO\_NAME' or 'untitled' drive) on the desktop.
2. Drag and drop the drive to the Trash.

## Table of Contents

Getting to know your device  
Identifying the Operation Panel  
Loading Battery/Memory Card  
Attaching the Wrist Strap  
Charging the Device

Installing Software CD

Transferring Files

Direct printing

PC Cam

Mass Storage

Connecting to TV

Recording voices

Taking still image  
    Using AE Lock  
    Back Light compensation  
    Using Self-timer  
    Using Flash Strobe  
    LCD Display  
    Applying Memory Mix

Recording moving images

- Using Operation Panel and Direction Control

- Applying Fader Effect

Playing back recorded files

- Playing back still images

- Playing back voice recordings and moving images

Playing MP3

- Using the Direction Control and Operation Panel

Deleting files

Setting Menu

- Manual Set

- Still Set

- Movie Set

- Audio Set

- Playback Set

- System Set

Various Settings

- Adjusting White Balance

- Adding P. Effect

- Setting Macro

- Setting Image Quality

- Setting Image Size

- Applying Scene

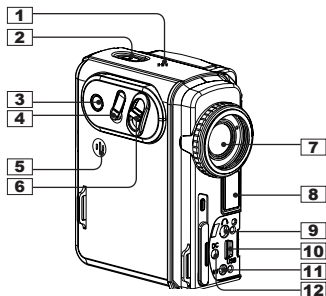


- Interval Shutter/Record
- Attaching voice to still image
- Protecting file from deletion
- Formatting the memory card

## Understanding LCD screen indicators

- Voice Recording
- Still Image Recording
- Moving Images Recording
- MP3 Playing
- Playback

## Getting to know your device



**1 Built-in Microphone**

Do not touch while recording.

**2 Power button**

**3 AE-Lock button**

**4 Shutter**

**5 Speaker**

**6 Zoom**

**7 Lens**

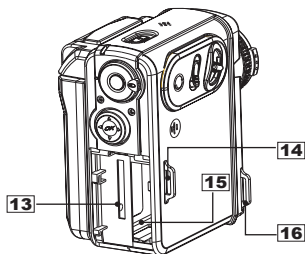
**8 Flash strobe**

**9 Earphone jack**

**10 USB port**

**11 A/V OUT jack**

**12 DC IN jack**



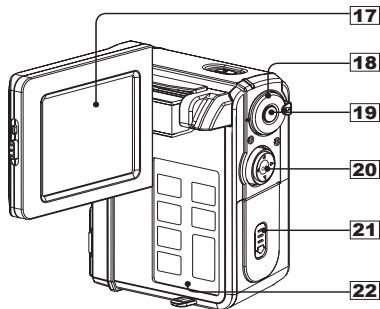
**13 SD/MMC Card Slot**

**14 Hook for Wrist Strap**

**15 Battery Slot**

**16 Hook for Wrist Strap**

## Getting to know your device - continued



**17** LCD Screen

**18** Mode Dial

🔊 Voice Record  
Rec Image Record

▶ Playback

MP3 MP3

☰ Menu

**19** Record button

For video and audio recordings.

**20** Direction Control button

▲ Back Light [On/Off]/Playback Zoom/ Stop

◀ Self-Timer [On/Off]/F.Bwd/Previous

▶ Flash [Off/On/Auto/Red Eye]/F.Fwd/Next

▼ Display

Record: [OSD off/ LCD off/ LCD on & OSD on]

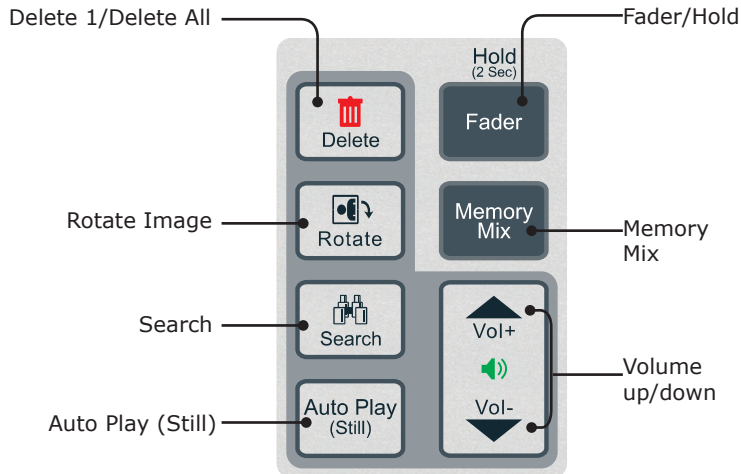
Playback: [Single/ OSD off/ LCD off/LCD on & Multi]

Ⓞ OK/Play/Pause/Playback Zoom Exit

**21** Battery/SD/MMC Cover

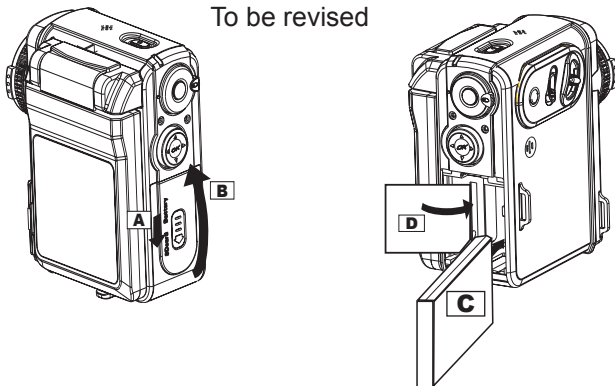
**22** Operation Panel

## Identifying the Operation Panel



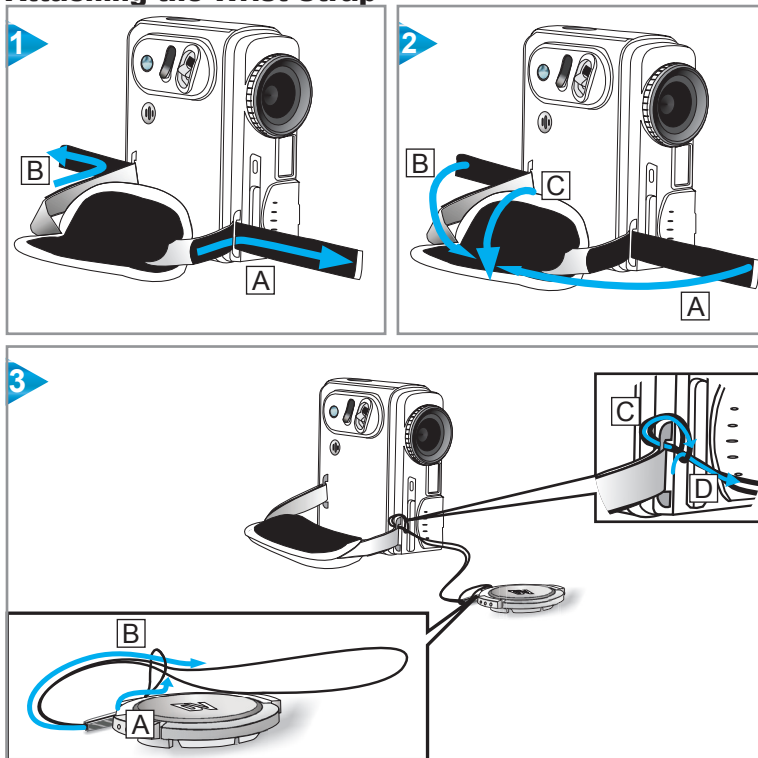
## Loading Battery/Memory Card

To be revised



- A** Slide the Battery/SD/MMC cover lever in the direction of the arrow (down).
- B** Flip the Battery/SD/MMC Cover in the direction of the arrow (up).
- C** Insert the battery into the battery slot.
- D** Insert the SD memory card into the SD/MMC slot.
- E** Close the Battery/SD/MMC cover.

## Attaching the Wrist Strap



## Charging the Device

There are three ways to charge this device. First, charge it via USB cable second, charge it via AC adapter and third, via the Dock Station (optional).

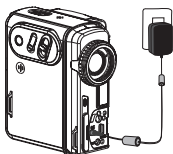
### Charging the device via USB cable

1. Connect the device to a computer with the USB cable provided in the package.
2. The charge indicator illuminates in red and starts charging. If the battery is fully charged, the charge indicator will be turned off automatically.



### Charging the device via AC Adapter

1. Connect the AC adapter to the DC IN jack on the device and the power plug to a power outlet.
2. The Charge indicator illuminates in red and starts charging. Turning on the device during the charging stage will lengthen the charge time.



### Charging the device via Dock Station (Optional)

Please refer to the Dock Station guide for more detail.

## Installing Software CD

The installation CD bundled with the device contains all the necessary software and information for you to operate the device.

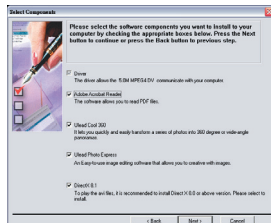
Please follow the instructions below to complete the software installation.

1. Insert the Software CD onto your CD-ROM drive or DVD-ROM drive. The **Select Language** dialogue box appears.

2. Select your preferred language and press “OK” to continue.

3. A **Welcome** dialogue box appears, press “Next”.

4. The **Select Components** dialogue box appears. Select the software you wish to install and press “Next”.

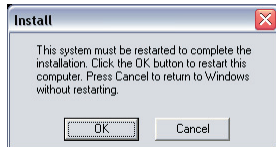


5. The **Select Program Folder** dialogue box appears telling you that setup program is about to add a program icon to your system, you can change the folder name listed in the text box, or simply press “Next” to continue.



6. The **Start Copying Files** dialogue box appears confirming that the listed software will be installed. Press “Next” to continue.

7. Follow the on-screen instructions to continue and complete the installation.

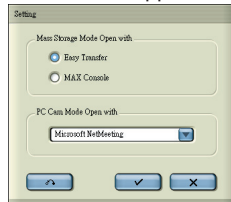
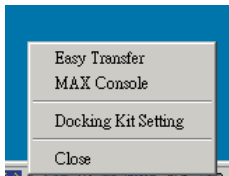




## Transferring Files

Before file transfer

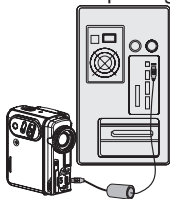
1. After successfully installing the driver a DV device icon will appear at your Windows OS taskbar. Right click on the icon to open the selection menu.
2. Select “Docking Kit Setting” from the menu and choose either “Easy Transfer or MAX Console as your default file transfer application.



3. Press  confirm and exit.

Initiating file transfer

1. Connect the device to a computer with the USB cable provided in the package.
2. Device enable icon will appear and Easy Transfer or MAX Console will launch automatically according to your prior setting.

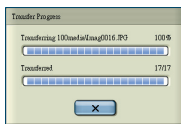


## Transferring Files - continued

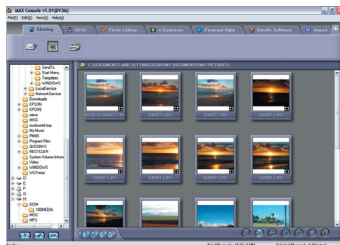
3. For Easy Transfer single file transfer dialogue or transfer all progress bar will appear depending on your setting.



or



4. For MAX Console select device's drive and go to the DCIM/100MEDIA folder for audio clips and images, go to the MP3 folder for MP3 files
5. Use the Drag and Drop method to copy files to your computer or vice versa.

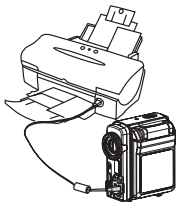


**Important:** In order for MP3 files to be playable on your device be sure to store those files in the MP3 folder. If the MP3 folder does not exist, turn on the device and switch the Mode dial to MP3 position. This will automatically create a MP3 folder on the device.

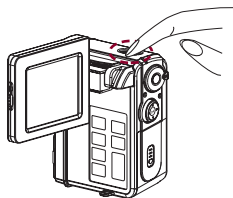
## Direct printing

**Important:** This function is only available to PictBridge™ compatible printers.

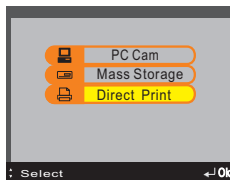
1. Connect the device to a printer via an USB cable.



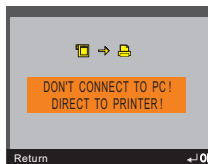
2. Power ON the device.



3. Select “Direct Print” from the OSD menu of the device.



4. Press OK button on the Direction Control to confirm device is connected to a printer.



4. Select your preferred settings from the menus.  
5. Select “Print” from the menu to print the selected images.

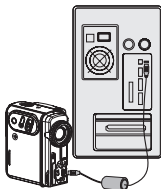
**Note:** When the device is connected to a computer under “Direct Print” mode, Windows OS will ask for a device driver. We **do not** provide such driver.

## Direct printing - continued

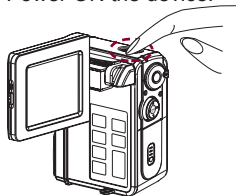
Main menu	Item	Setting		Description
Direct Print	Select PIC	Select		Mark still images for direct printing.
		All		
		Cancel		
	Optimal	On		Optimize image processing.
		Off		
	Copies			Select number of copies to be printed for each marked image.
	Paper Set	Size	4" X 6"	Select paper size.
			5" X 7"	
			8.5" x 11"	
			Default	
		Paper	Photo	Select paper quality.  • Options vary according to your selected paper size.
			Fast Photo	
			Default	
		Border	Off	Apply borders to printing images.
			On	
Default				
Print			Print marked images.	

## **PC Cam**

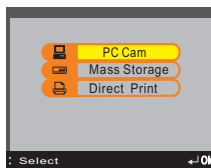
1. Connect the device to a computer with the USB cable provided in the package.



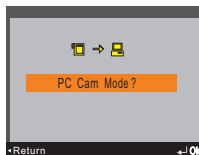
2. Power ON the device.



3. Select "PC Cam" from the OSD menu.



4. Press OK button on the Direction Control to confirm to enter PC Cam mode.

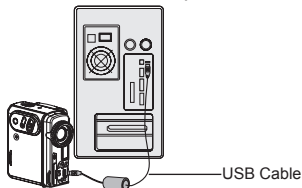


5. Launch the PC Cam Toolkit to select your default PC Cam software.

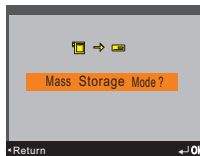
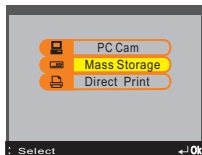
## **Mass Storage**

Through mass storage mode, the device becomes a storing device that allows to store, access, and delete data similar to your local hard disk. To setup Mass Storage follow the instructions below.

1. Connect the device to a computer with the USB cable provided in the package.

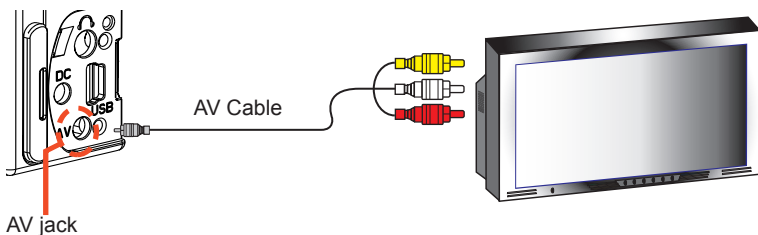


2. Power ON the device.
3. Select "Mass Storage" from the OSD menu press OK on the Direction Control.
4. Press OK button on the Direction Control to confirm to enter Mass Storage mode.



5. Open "My Computer" from your desktop.
6. Open "Removable Disk".
7. You may now store, access or delete data from the "Removable Disk".

## Connecting to TV



1. Connect the device to a TV set with the A/V cable.
2. Connect yellow end of the cable to the Video input (yellow) jack on your TV set.
3. Connect the red and white ends of the cable to the Audio input (red, white) jacks on your TV set.

*Note: This device can also connect to other devices that are equipped with Audio and Video input jacks. (e.g.. VCR, DVD Recorder and etc.)*

## Recording voices

1. Turn the Mode dial to .

*Note: Ready for voice recording icon appears on the LCD screen.*

2. Press the Record button to start voice recording.



3. Press the Record button again to stop recording.



## Using the Operation Panel and Direction Control

There are certain settings that you can adjust using the Operation Panel and Direction Control.



To lock all buttons hold down for 2 seconds during recording .  
To release hold down for another 2 seconds

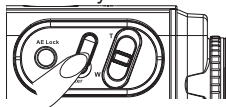


Turn LCD on  
or off.



## Taking still images

1. Turn the Mode dial to **Rec.**
2. Toggle Zoom-in or Zoom-out to frame your picture.
3. Press and hold the AF/Shutter halfway for the lens to adjust focus automatically.
4. Press down the AF/Shutter fully to take a picture.



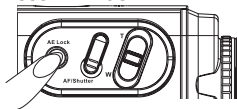
### Using AE Lock

AE Lock (Automatic Exposure Lock) allows the device to lock the exposure while taking a picture. This function is effective when the contrast is too strong between the subject and background or when a subject is backlit.

#### How to set **AE Lock**?

Focus on the subject on which you wish to lock the exposure setting, then press AE Lock button to lock the exposure setting.

1. Press **AE Lock**



2. **AE Lock** icon displays on screen.



3. To take still image perform the steps in “Taking still images” section.

## Back Light compensation

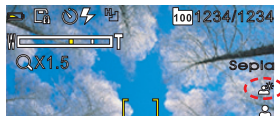
Back Light compensation is effective when recording a backlighted subject or when the background exposure is too strong.

How to apply **Back Light** compensation?

1. Press the up button on the Direction Control



2. **Back Light** icon displays on screen.



3. To take still image perform the steps in "Taking still images" section.

## Using Self-timer

Self-timer allows the device to capture still images 10 seconds after the AF/Shutter button is pressed.

How to set **Self-timer**?

1. Press the left button on the Direction Control



2. **Self-timer** icon displays on screen.



3. Press AF/Shutter halfway to adjust focus and completely to activate self-timer, the red and blue LEDs will start blinking, camera will capture a still image after 10 seconds count-down.

## Using Flash Strobe

Flash strobe is effective when taking still images under poor lighting conditions. By default the device detects exposure level and activates the Flash strobe automatically when needed but you can also manually turn the Flash strobe on/off or set to red eye reduction.

### How to set **Flash strobe**?

1. Press the right button repeatedly on the Direction Control to select the flash strobe preference.



2. **Flash strobe** icon displays on screen.



#### Flash strobe modes



3. To take still image perform the steps in “Taking still images” section.

## LCD Display

User can choose to turn OSD, LCD on/off by pressing the down button repeatedly on the Direction Control.



OSD off → LCD off → LCD on & OSD on  
(Default)

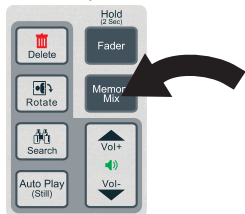
Switching to LCD off will turn off your LCD during Power Save mode therefore helping your device to save energy.

## Applying Memory Mix

This option digitally applies decoration effects to still images.

How to apply **Memory Mix** to still images?

1. Press the **Memory Mix** button on the Operation Panel.



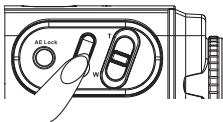
2. Press left or right button on the Direction Control to select effect. A preview will appear on the LCD screen.



3. Press the **OK** button to select the displaying effect.

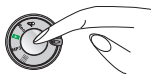


4. Press AF/Shutter halfway to adjust focus and completely to capture a still image with the selected Memory Mix effect.

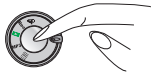


## Recording moving images

1. Turn the Mode dial to **Rec**.
2. Press the Record button to record moving images.
3. Toggle Zoom-in or Zoom-out before or during recording to focus.



4. Press the Record button again to stop recording.



## Using the Operation Panel and Direction Control

Before and during recording there are certain settings that you can adjust using the Operation Panel and Direction Control.



To lock all buttons hold down for 2 seconds during recording .

To release hold down for another 2 seconds

User can choose to turn OSD, LCD on/off by pressing the down button repeatedly on the Direction Control.



OSD off → LCD off → LCD on & OSD on (Default)

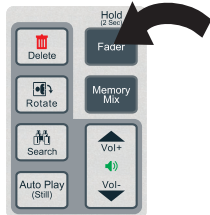
Switching to LCD off will turn off your LCD during Power Save mode therefore helping your device to save energy.

## Applying Fader Effects

This option digitally applies fading effects to moving images.

How to add **Fader** to moving images?

1. Press the **Fader** button on the Operation Panel.
2. Press left or right button on the Direction Control to select effect. A preview will appear on the LCD screen.



3. Press the **OK** button to select the displaying effect.
4. Press Record to start recording with the selected Fader effect.



# Playing back recorded files

## Playing back still images

1. Turn the Mode dial to .

The last recorded file displays on the LCD screen.

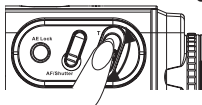
2. Use the left/right buttons on the Direction Control to search for the still image you wish to view.



3. Use the up button to enlarge the viewing of the selected still image on the LCD screen.



4. Use the Zooming buttons to enlarge or reduce the viewing size.



5. For enlarged images use the four directional buttons to scroll through the selected image.



6. Press OK button to restore to original size.



### Display setting

When not zooming, press the down button on the Direction Control to set the LCD setting

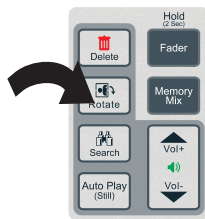


Single	→	OSD	→	LCD	→	LCD
		off		off		on & Multiple

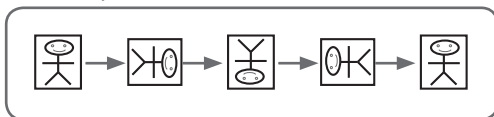


## Rotating still images

1. Press the Rotate button on the panel to rotate the image 90° clockwise.



Rotation cycle

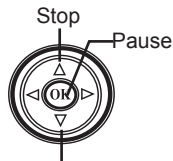
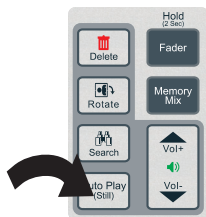


2. Press the OK button to confirm file rotation.



## Auto Play (Still)

1. Press the Auto Play (Still) button to display recorded still images in slide show format.
2. Use the Direction Control and Operation Panel for additional commands during Auto Play.



Display setting:  
OSD On/Off



Hold for 2 sec. to lock buttons. Repeat procedures to release hold.

## Playing back voice recordings and moving images

1. Turn the Mode dial to .

The last recorded file displays on the LCD screen.

2. Use the left/right buttons on the Direction Control to seek for voice recording, moving images and voice attached still images that you wish to play.



3. Press the OK button to play the selected file.



### Other functions

1. During playback press OK to pause



2. During playback press left button to Fast Backward



3. During playback press right button to Fast Forward



4. During playback press up button to Stop.



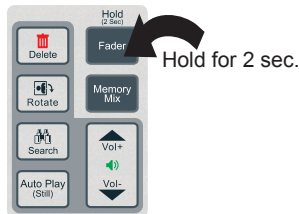
## Adjusting volume

Press the Vol+ or Vol- to adjust volume.



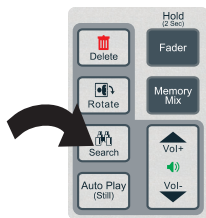
## Locking the device

During playback hold down the Fader button for 2 seconds to lock all buttons. Hold down for another 2 seconds to release lock.



## Search

Press the Search button to play the first five seconds of voice recording or moving images in the current folder.

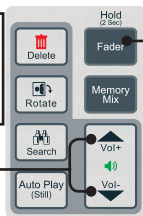


Use the Direction Control and Operation Panel for additional commands during Search.



Display setting:  
OSD On/Off

Volume  
adjustment  
during  
Search



Hold  
2 sec.  
to lock  
buttons.  
Hold  
another  
2 sec. to  
release.

## Playing MP3

1. Turn the Mode dial to **MP3**.

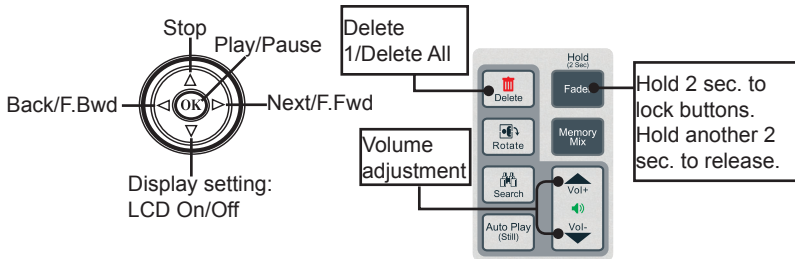
MP3 list displays on the LCD screen.

2. Use the left/right buttons on the Direction Control to toggle through the MP3 list.

3. Press the OK button to play the selected MP3 file.

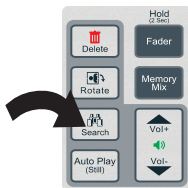


### Using the Direction Control and Operation Panel



### Search

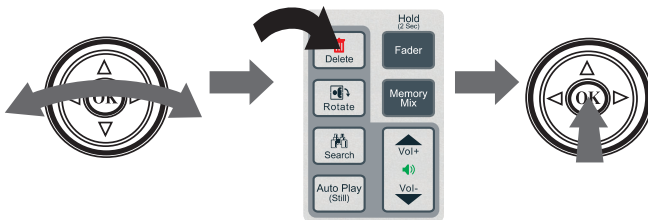
Press the Search button to play the first five seconds of MP3 files.



## Deleting files

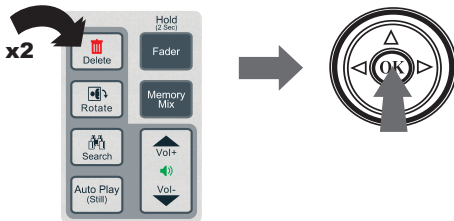
Deleting single file

1. Press the left/right button to select the file you wish to delete.
2. Press the Delete button once to delete the selected file.
3. Press the OK button to confirm.




Deleting all files

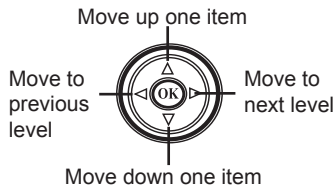
1. Press the Delete button twice to delete all files in the selected folder.
2. Press the OK button to confirm.



Press the up button to cancel delete operation.

## Setting Menu









1. Turn the Mode Dial to .  
Menu screen appears on the LCD screen.
2. Use the 4-direction buttons on the Direction Control to toggle through the Menu.

















3. Press the OK button to select then return to previous level.



## Manual Set




Main Menu	Item	Setting	Description
Manual Set 	White Balance Adjustment 	Auto	Sets the white balance for still and moving images.
		Daylight 	
		Cloudy 	
		Fluorescent 	
		Tungsten 	
	P.Effect	Off	Sets the picture effect for still and moving images.
		Negative	
		Sepia	
		BW	
		Solarize	
		Pastel	
	AF Mode	Normal 	Sets focal point to near distance or normal distance objects.
		Macro 	

## Still Set









Main Menu	Item	Setting	Description
Still Set 	Scene	Auto	Sets the scene selection.
		Portrait 	
		Landscape 	
		Sports 	
		Night Portrait 	
	Quality 	Normal 	Sets the recording quality of still images.
		High 	
		Fine 	
	Image Size 	Economic 	Sets the recording size of still images.
		Normal 	
		Fine 	
	Quick Review 	Off	Quick review on last recorded image
		On	




## Still Set - continued

Main Menu	Item		Setting	Description
Still Set 	Attach Voice 		No	Attach voice recording to still image right after recording.
			Yes	
	Int. Shut.	Off		Turn off interval shutter.
		On		Turn on interval shutter.
		Interval	1 Min	Interval between each still image recording within the total timeframe.
			5 Min	
			10 Min	
			30 Min	
		Elapse	1 Hour	Total recording cycle timeframe.
			2 Hour	
			6 Hour	
			12 Hour	
			24 Hour	
			Full	
Date Display 		Off	Superimpose date onto photo.	
		On		





## Movie Set

Main Menu	Item	Setting	Description
Movie Set 	Image Size 	Economic 	Recording size of the moving images.
		Normal 	
		Fine 	
	Quality 	Normal 	Sets the recording quality of moving images.
		Fine 	
	Night	Off	Turns on or off the night recording function.
		On	







## Movie Set - continued

Main Menu	Item	Setting		Description
Movie Set 	Int. Rec.	Off		Turn off interval shutter.
		On		Turn on interval shutter
		Interval	1 Min	Interval between each recording within the total timeframe.
			5 Min	
			10 Min	
			30 Min	
		Rec. Time	5 Sec	Recording time during each interval.
			10 Sec	
			15 Sec	
			30 Sec	
		Elapse	1 Hour	Total recording cycle time-frame.
			2 Hour	
			6 Hour	
			12 Hour	
			24 Hour	
			Full	
AF Mode	On		Turns on or off the AF function in moving images recording. Turning off the AF will reduce noise during recording.	
	Off			







## Audio Set

Main Menu	Item	Setting	Description
Audio Set 	Audio Mode 	SP 	Audio recording quality.
		LP 	

## Playback Set

Main Menu	Item	Setting	Description
Playback Set 	Attach Voice 	No	Select and attach voice to still image.
		Yes	
	Print Mark 	Off	Mark still images for direct print.
		On	
	Email Mark 	Off	Mark still images for direct email.
		On	
	Protect 	Off	Protect selected file from deletion.
		On	
	Format 	No	Format memory card. All contents, including protected files will be deleted.
		Yes	




## System Set

Main Menu	Item	Setting	Description
System Set 	Clock Set 	Date	Sets the system date and time.
		Time	
	TV System 	NTSC	Selects the TV system when connecting to TV.
		PAL	
	Beep 	Melody	Sets the system beep.
		Normal	
		Off	
	Auto Power Off 	1 Min	Sets automatic power off time.
		3 Min	
		5 Min	
		Off	
	Silence 	Off	Turn on or off the beep and LED sounds.
		On	

## Various settings

### Adjusting White Balance

By default this device automatically detects and adjusts White Balance level depending on surrounding lighting condition, however for optimal result, user can manually set the white balance level to match its condition.

1. Turn the Mode dial to .
2. Select Manual Set  from the menu.
3. Select White Balance Adjustment  from the menu.
4. Choose the White Balance adjustment that fits your surrounding lighting condition.

#### **Auto**

Determines the best white balance level automatically.

#### **Daylight**

Recording under sunlight conditions.

#### **Cloudy**

Recording under cloudy conditions.

#### **Fluorescent**

Recording under fluorescent lighting or neon signs.

#### **Tungsten**



Recording under bluish lighting conditions.

5. Turn the Mode dial to **Rec**.
6. Press AF/Shutter to record still image or Record button to record moving images with the new White Balance setting.



## Adding P. Effect

This option enriches your images by adding picture effects to your still images or moving images.

1. Turn the Mode dial to .
2. Select Manual Set  from the menu.
3. Select P Effect from the menu.
4. Choose your preferred effect.

### Negative

Adds a negative effect to your image by reversing its colors.

### Sepia

Adds an “old-picture” effect to your image.

### BW

Adds black and white effect to your image.

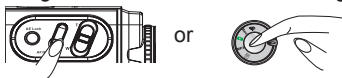
### Solarize

Adds a sketch effect to your image.

### Pastel





Adds a comic effect to your image

5. Turn the Mode dial to **Rec**.
6. Press AF/Shutter to record still image or Record button to record moving images with the new P Effect setting.



## Setting Macro

You can turn on the Macro option while recording near distance objects. This will shift the auto focus lens to focus on near objects instead of distance objects.

1. Turn the Mode dial to .
2. Select Manual Set  from the menu.
3. Select AF Mode from the menu.
4. Select  (Macro) for near range recording or  (Normal) for normal range recording.
5. Turn the Mode dial to **Rec**.
6. Press AF/Shutter to record still image or Record button to record moving images with the new AF Mode setting.







*Note: For moving image recording be sure to turn on the AF mode in the Movie Set menu as well.*



## Setting Image Quality





This will set the image quality of still images. The quality of the image is directly correlated to the size of the image. Hence higher image quality reflects larger file size.

1. Turn the Mode dial to .
2. Select Still Set  for still image and Movie Set  for moving images from the menu.
3. Select Quality  from the menu.
4. Select an image quality.
5. Turn the Mode dial to **Rec**.
6. Press AF/Shutter to record still image or Record button to record moving images with the new image quality setting.



## Setting Image Size



This will set the image size for images. The image size directly correlates to the file size, therefore higher image size reflects larger file size.

1. Turn the Mode dial to .
2. Select Still Set  for still image and Movie Set  for moving images from the menu.
3. Select Image Size  from the menu.
4. Select an image size.
5. Turn the Mode dial to **Rec**.
6. Press AF/Shutter to record still image or Record button to record moving images with the new image size setting.



## Applying Scene

By default this device automatically detects and adjusts the scenario of the image, however for optimal result, user can manually set the scene to match your condition.

1. Turn the Mode dial to .
2. Select Still Set  from the menu.
3. Select Scene from the menu.
4. Choose the a scene that fits your condition.

### **Auto**

Adjusts scene automatically.

### **Portrait**

For portrait recording.

### **Sports**

For sport, moving objects recordings.

### **Landscape**

For far distance recording.

### **Night Portrait**




For night or poor lighting condition recordings.

5. Turn the Mode dial to **Rec**.
6. Press AF/Shutter to record still image with the selected scene setting.



## Interval Shutter/Record

This will set a time interval to record still images or moving images.

1. Turn the Mode dial to .
2. Select Still Set  for still image or Movie Set  for moving images from the menu.
3. Select Int. Shut for still image and Int. Rec. for moving images the menu.
4. Choose an interval time for still image or moving images.
5. Choose a REC Time for moving images.
5. Choose Elapse time for still image or moving images.

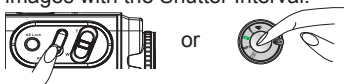
For still images

Interval	1 Min
	5 Min
	10 Min
	30 Min
Elapse	1 Hour
	2 Hour
	6 Hour
	12 Hour
	24 Hour
	Full

For moving images

Interval	1 Min
	5 Min
	10 Min
	30 Min
Rec. Time	5 Sec
	10 Sec
	15 Sec
	30 Sec
Elapse	1 Hour
	2 Hour
	6 Hour
	12 Hour
	24 Hour
	Full

5. Turn the Mode dial to **Rec.**
6. Press AF/Shutter to take still image or Record button to record moving images with the Shutter Interval.



**Important:** Be sure the Interval Shutter option is set to [on] in the Still Set menu for still image taking and Movie Set menu for moving images recording.

## Attaching voice to still images

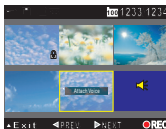
This lets you to add voice recording to still images.

1. Turn the Mode dial to .

2. Select  (Attach Voice) from the menu.

The last recorded file will appear on the LCD screen.

3. Select a still image you wish to attach a voice recording to by using the Direction Control.



4. Press Record to start recording voice to the selected still image.



5. Press the Record button again to stop recording.



6. To exit press up button.



*Note: If you have set Attach Voice [On] in the Still Set menu and wish to record a voice right after taking a still image, please follow step 4 to step 6.*

## Protecting file from deletion

This lets you to protect a file from deletion therefore preventing mistakenly deleting an important file.



1. Turn the Mode dial to .
2. Select  (Protect) from the menu.  
The last recorded file will appear on the LCD screen.
3. Select a file you wish to protect by using the Direction Control.
4. Press OK button to protect the selected file.
5. To exit press Up button.

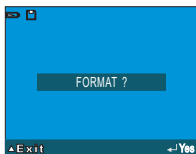


*Note: To un-protect the file select the protected file and repeat the procedures.*

## Formatting the memory card

This lets you to format your memory card entirely including protected files.

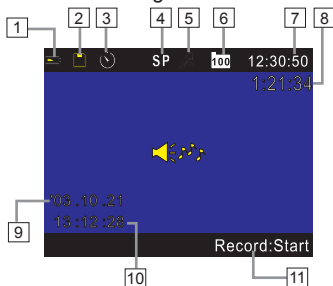
1. Turn the Mode dial to .
2. Select  (Format) from the menu.
3. Press OK button to format the card.
4. To exit press Up button.



# Understanding LCD screen indicators

## Voice Recording

### Before recording



### During recording



1 Battery remaining indicator

2 File protection indicator

3 Self timer indicator

4 Recording quality indicator

5 Device mode indicator

6 Current folder indicator

7 Total recordable time

8 Total recording time

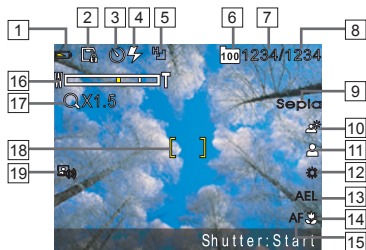
9 System date

10 System time

11 Command option menu

12 Recording time

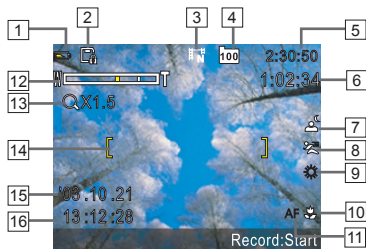
## Still Image Recording



- |                                       |                           |
|---------------------------------------|---------------------------|
| 1 Battery remaining indicator         | 13 AE-lock indicator      |
| 2 File protection indicator           | 14 Macro indicator        |
| 3 Self timer indicator                | 15 AF indicator           |
| 4 Flash strobe indicator              | 16 Zoom indicator         |
| 5 Image size indicator                | 17 Zoom ratio indicator   |
| 6 Current folder indicator            | 18 AF frame               |
| 7 Recorded image counter              | 19 Attach voice indicator |
| 8 Total recordable image counter      |                           |
| 9 Picture effect indicator            |                           |
| 10 Backlight indicator                |                           |
| 11 Scene indicator                    |                           |
| 12 White balance adjustment indicator |                           |

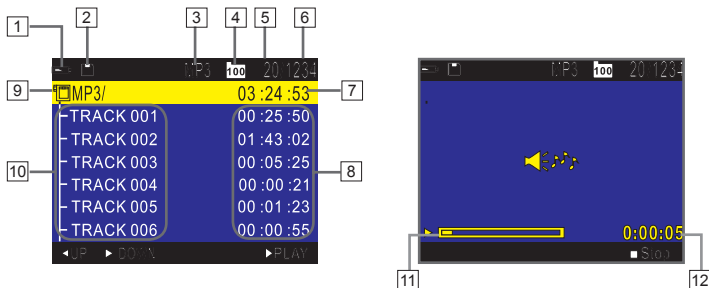


## Moving Images Recording



- |                                    |                         |
|------------------------------------|-------------------------|
| 1 Battery remaining indicator      | 13 Zoom ratio indicator |
| 2 File protection indicator        | 14 AF frame             |
| 3 Recording size indicator         | 15 System date          |
| 4 Current folder indicator         | 16 System time          |
| 5 Total estimative recordable time |                         |
| 6 Total recording time             |                         |
| 7 Night recording indicator        |                         |
| 8 Scene indicator                  |                         |
| 9 White balance indicator          |                         |
| 10 Macro indicator                 |                         |
| 11 AF indicator                    |                         |
| 12 Zoom indicator                  |                         |

## MP3 playing



1 Battery remaining indicator

2 File protection indicator

3 Device mode indicator

4 Current folder indicator

5 Current selected track

6 Total tracks counter

7 Total playing time indicator

8 Individual track playing time indicator

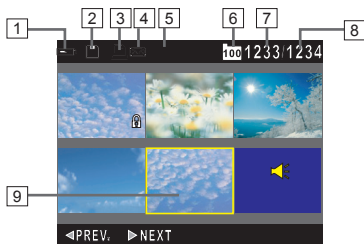
9 MP3 files location indicator

10 Track name indicator

13 Playing status gauge

14 Playing time

### Still image playback



- 1 Battery remaining indicator
- 2 File protection indicator
- 3 Print mark indicator
- 4 Email mark indicator
- 5 Image size indicator
- 6 Current folder indicator
- 7 Sequence of selected still image
- 8 Total recorded still image
- 9 Current selected still image

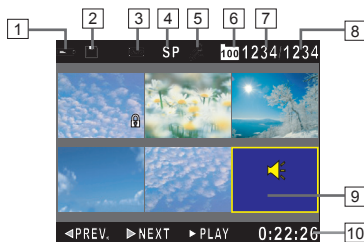
### Still image playback



- 1 Battery remaining indicator
- 2 File protection indicator
- 3 Email mark indicator
- 4 Image size indicator
- 5 Current folder indicator
- 6 Current selected moving image order
- 7 Total recorded moving image
- 8 Total playing time of selected file
- 9 Current selected moving image

- 9 Playing progress gauge
- 10 Playing time

## Playback - continued



- 1 Battery remaining indicator
- 2 File protection indicator
- 3 Email mark indicator
- 4 Audio mode indicator
- 5 Device mode indicator
- 6 Current folder indicator
- 7 Current selected voice recording order
- 8 Total recorded voice recording
- 9 Current selected voice recording
- 10 Total playing time of selected file